

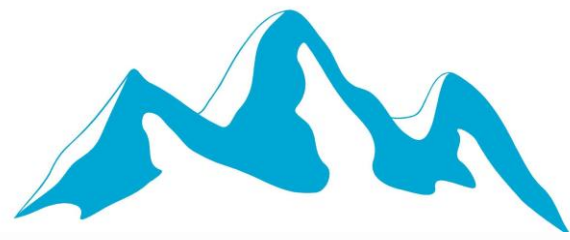
2024 FISU WORLD UNIVERSITY CHAMPIONSHIP ORIENTEERING



BANSKO 2024

FISU
WORLD
UNIVERSITY
CHAMPIONSHIP
ORIENTEERING

1st General Technical Meeting



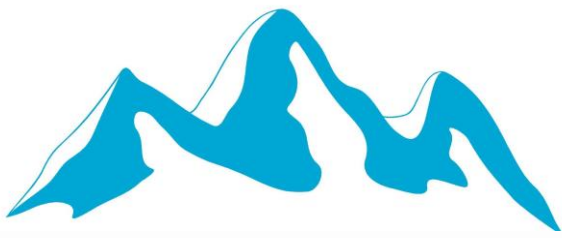
2024 FISU WORLD UNIVERSITY CHAMPIONSHIP ORIENTEERING



FISU
WORLD
UNIVERSITY
CHAMPIONSHIP
ORIENTEERING

ROLL CALL





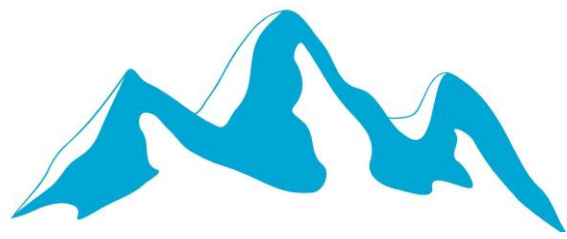
2024 FISU WORLD UNIVERSITY CHAMPIONSHIP ORIENTEERING



BANSKO 2024

FISU
WORLD
UNIVERSITY
CHAMPIONSHIP
ORIENTEERING

CISCA MEMBERS



2024 FISU WORLD UNIVERSITY CHAMPIONSHIP ORIENTEERING



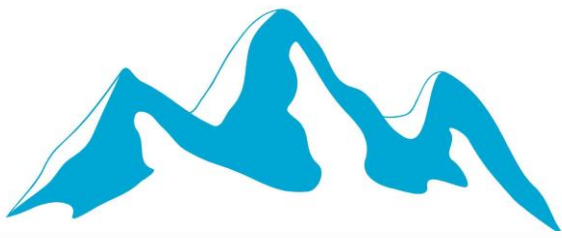
FISU
WORLD
UNIVERSITY
CHAMPIONSHIP
ORIENTEERING

CISCA members

(International Control, Supervision and Arbitration Committee)

FISU CISCA Chair – Mr. Duarte LOPES (POR)





2024 FISU WORLD UNIVERSITY CHAMPIONSHIP ORIENTEERING



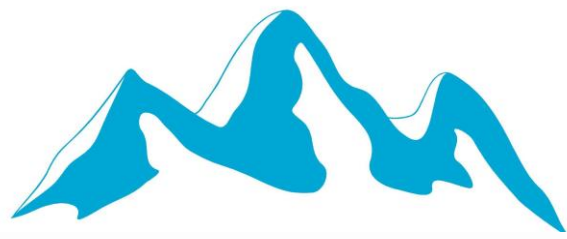
FISU
WORLD
UNIVERSITY
CHAMPIONSHIP
ORIENTEERING

CISCA members

(International Control, Supervision and Arbitration Committee)

FISU International Control Committee Member
– Mr. Karl TEREPING (EST)





2024 FISU WORLD UNIVERSITY CHAMPIONSHIP ORIENTEERING



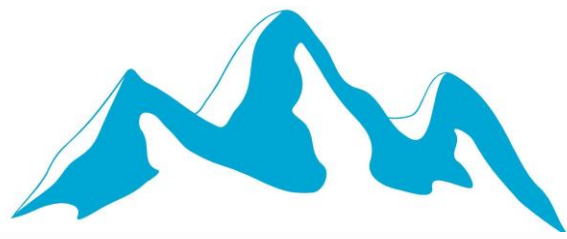
FISU
WORLD
UNIVERSITY
CHAMPIONSHIP
ORIENTEERING

CISCA members

(International Control, Supervision and Arbitration Committee)

**FISU International Medical Committee Member
– Mr. Kadirhan SUNGUROGLU (TUR)**





2024 FISU WORLD UNIVERSITY CHAMPIONSHIP ORIENTEERING



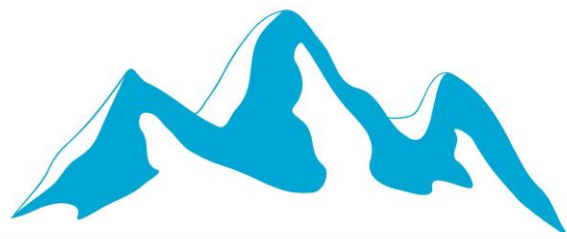
FISU
WORLD
UNIVERSITY
CHAMPIONSHIP
ORIENTEERING

CISCA members

(International Control, Supervision and Arbitration Committee)

FISU Technical Committee Chair Orienteering
– Mr. Ola KAABERG (SWE)





2024 FISU WORLD UNIVERSITY CHAMPIONSHIP ORIENTEERING



BANSKO 2024

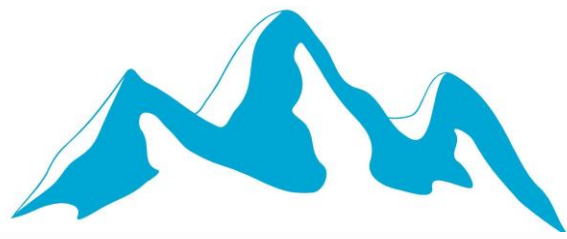
FISU
WORLD
UNIVERSITY
CHAMPIONSHIP
ORIENTEERING

CISCA members

(International Control, Supervision and Arbitration Committee)

**FISU Staff – Ms. Chloé DRAGANI (SUI) FISU
Championships and World Cups Department**





2024 FISU WORLD UNIVERSITY CHAMPIONSHIP ORIENTEERING



FISU
WORLD
UNIVERSITY
CHAMPIONSHIP
ORIENTEERING

ACCREDITATION

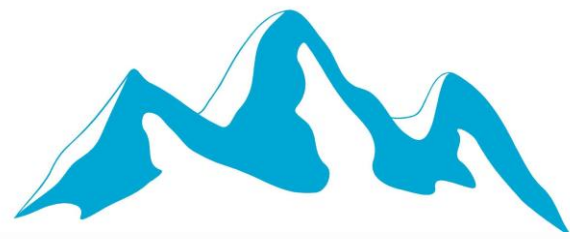
As of July 31st 19:00 we have fully accredited 300 participants from 29 countries. Missing one accreditation (USA).

Total of 247 athletes (248 expected and 53 officials)

29 countries have finished the full accreditation process (delegation arrived, payment completed, FISU stickers received)

ATTENTION: To compete, the FISU sticker on the accreditation card is mandatory.

Contact information Mr. Karl TEREPING: +372 535 85 788



2024 FISU WORLD UNIVERSITY CHAMPIONSHIP ORIENTEERING



FISU
WORLD
UNIVERSITY
CHAMPIONSHIP
ORIENTEERING

International Technical Commission (TC)

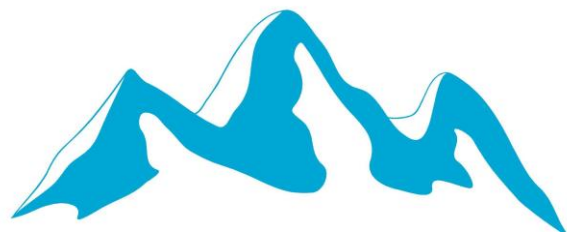
Technical Delegate: Mr. Ola KAABERG (SWE)

OC Competition Manager: Mr. Todor PEDEV (BUL)

FISU International Medical Committee Member: Mr. Kadirhan SUNGUROGLU (TUR)

Three experts nominated within the participating delegations (to be appointed).





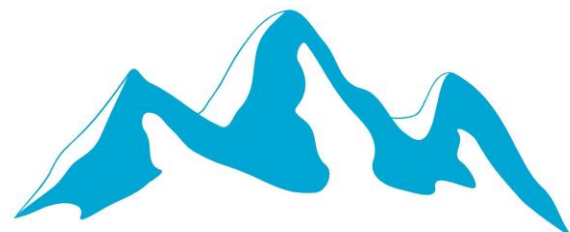
2024 FISU WORLD UNIVERSITY CHAMPIONSHIP ORIENTEERING



BANSKO 2024

FISU
WORLD
UNIVERSITY
CHAMPIONSHIP
ORIENTEERING

GENERAL INFORMATION & CONTACTS



2024 FISU WORLD UNIVERSITY CHAMPIONSHIP ORIENTEERING

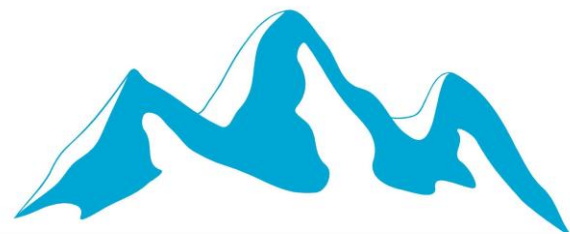


FISU
WORLD
UNIVERSITY
CHAMPIONSHIP
ORIENTEERING

PROGRAMME OF THE EVENT

Tuesday, 30 July 2024	Arrivals		
Wednesday, 31 July 2024	Accreditation	EC	08:30 - 18:00
	Model events	Motikata, Bansko	09:00 - 17:00
	First general technical meeting	EC	19:00
Thursday, 1 August 2024	<u>Sprint</u>		
	First start		14:30
	Opening ceremony	Bansko - centre	17:30 - 18:00
	Medal ceremony		18:00 - 18:30
Friday, 2 August 2024	<u>Sprint relay</u>		
	Mass start	Razlog - centre	14:00
	Medal ceremony	Razlog - centre	15:30
Saturday, 3 August 2024	Rest day		
	Cultural activity	Bansko	
	Second general technical meeting	EC	18:00
Sunday, 4 August 2024	<u>Middle distance</u>		
	First start	Motikata	09:00
	Flower ceremony		14:00
Monday, 5 August 2024	<u>Relay</u>		
	Mass start men	Motikata	09:30
	Mass start women	Motikata	09:40
	Flower ceremony	Motikata	11:30
	Medal ceremony	Bansko - centre	18:00
	Closing ceremony	Bansko - centre	18:30
Party	EC	20:30 - 24:00	
Tuesday, 6 August 2024	Departures		

We have changed the time of the Opening Ceremony. It will start at 18:00.



BANSKO 2024

FISU
WORLD
UNIVERSITY
CHAMPIONSHIP
ORIENTEERING

2024 FISU WORLD UNIVERSITY CHAMPIONSHIP ORIENTEERING

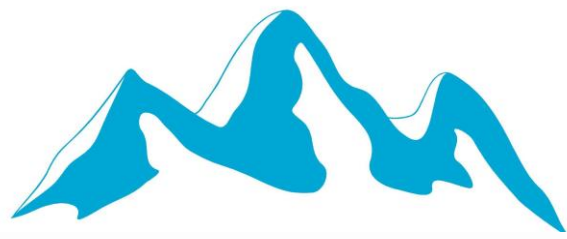
OPENING HOURS OF THE OFFICE OF THE TOURNAMENT & LOCATION

The event office will be located in the Event Centre.

Opening hours:

Wednesday, 31 July	08:30 - 21:00	
Thursday, 1 August	08:00 - 12:00	19:00 - 21:00
Friday, 2 August	08:00 - 09:00	18:00 - 21:00
Saturday, 3 August	08:00 - 10:00	18:00 - 20:00
Sunday, 4 August	08:00 - 09:00	18:00 - 20:00
Monday, 5 August		16:00 - 17:30
Tuesday, 6 August		

→ Through the time of the competitions, the event office is at the arena.



2024 FISU WORLD UNIVERSITY CHAMPIONSHIP ORIENTEERING



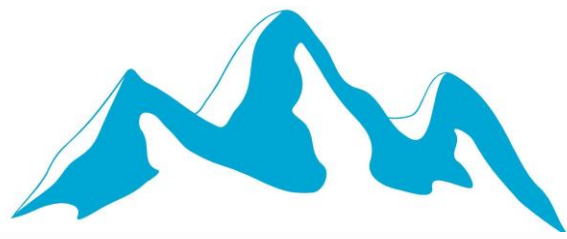
BANSKO 2024

FISU
WORLD
UNIVERSITY
CHAMPIONSHIP
ORIENTEERING

RESULTS

LIVE RESULTS, GPS TRACKING, OFFICIAL RESULTS, SPLIT TIMES WILL BE PUBLISHED ON THE WEBPAGE

OFFICIAL RESULTS WILL BE DISTRIBUTED TO THE TEAM BOXES IN THE END OF THE EVENING.



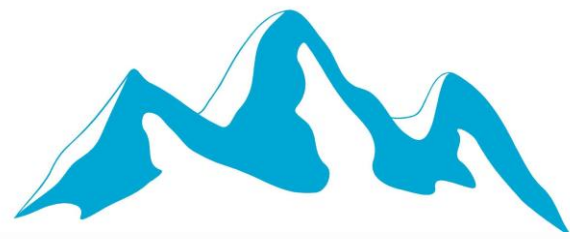
2024 FISU WORLD UNIVERSITY CHAMPIONSHIP ORIENTEERING



BANSKO 2024

FISU
WORLD
UNIVERSITY
CHAMPIONSHIP
ORIENTEERING

CEREMONIES



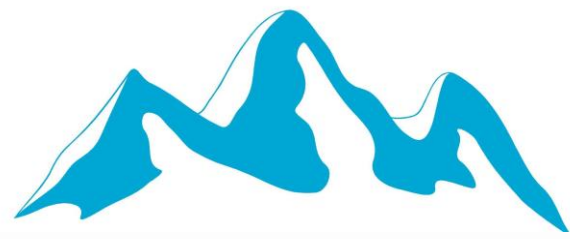
2024 FISU WORLD UNIVERSITY CHAMPIONSHIP ORIENTEERING



FISU
WORLD
UNIVERSITY
CHAMPIONSHIP
ORIENTEERING

OPENING CEREMONY INFORMATION

- Opening ceremony will take place at the finish arena at 18:00.
- All participants must attend using official country clothing.
- Every country have to appoint 2 persons from their delegation and follow the instructions of the volunteers.
- No flags or political manifestations are allowed.



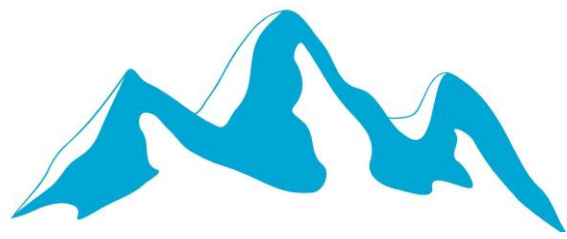
2024 FISU WORLD UNIVERSITY CHAMPIONSHIP ORIENTEERING



FISU
WORLD
UNIVERSITY
CHAMPIONSHIP
ORIENTEERING

MEDALS CEREMONIES INFORMATION

- All medalists must attend the ceremony using official country clothing. Please check the event program for the days of the medals ceremonies.
- There will be no flower ceremonies for the sprint and sprint relay
- No flags or political manifestations are allowed

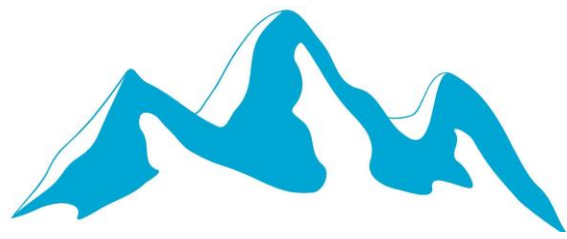


2024 FISU WORLD UNIVERSITY CHAMPIONSHIP ORIENTEERING



FISU
WORLD
UNIVERSITY
CHAMPIONSHIP
ORIENTEERING

MEDICAL



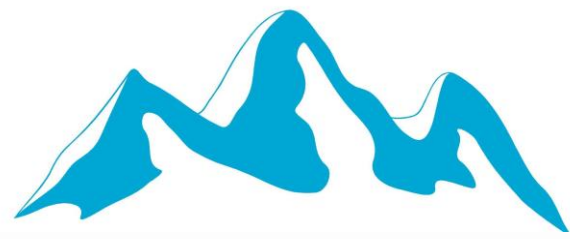
2024 FISU WORLD UNIVERSITY CHAMPIONSHIP ORIENTEERING



FISU
WORLD
UNIVERSITY
CHAMPIONSHIP
ORIENTEERING

MEDICAL ARRANGEMENTS

- There will be medical services and medical car at the arenas.
- Also , the local hospital, Medical Center Blagoveshtenie (2.8km from the hotel), is open for emergencies.
- In case of emergency, call 112!



2024 FISU WORLD UNIVERSITY CHAMPIONSHIP ORIENTEERING



BANSKO 2024

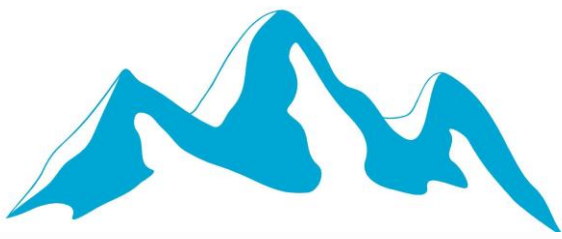
FISU
WORLD
UNIVERSITY
CHAMPIONSHIP
ORIENTEERING

Antidoping Control

Antidoping controls will be carry away by the Bulgarian antidoping agency with the supervision of FISU Medical Comittee Representative

Procedure:

After the end of the race, designated chaperons will approach the selected athletes and will indicate that he/she must be present in the antidoping control and shall be accompanying by them until the procedure is completed.



2024 FISU WORLD UNIVERSITY CHAMPIONSHIP ORIENTEERING



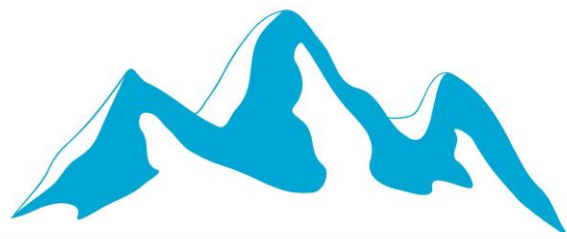
BANSKO 2024

FISU
WORLD
UNIVERSITY
CHAMPIONSHIP
ORIENTEERING

Antidoping Control

Procedure:

- If selected the athlete **MUST**
- Bring accreditation card to DCS
- Arrive at DCS as soon as possible after notification
- Allowance is made for media interviews medal ceremonies etc.
- NOT shower but may change clothing
- Notify DCO of any relevant TUE



2024 FISU WORLD UNIVERSITY CHAMPIONSHIP ORIENTEERING

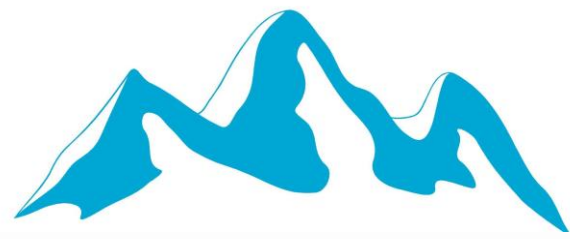


BANSKO 2024

FISU
WORLD
UNIVERSITY
CHAMPIONSHIP
ORIENTEERING

CULTURAL ACTIVITIES

- In the rest day it is possible to visit all the museums in Bansko with accreditation cards.
- From 3rd August there will be Craft fair in the centre of Bansko on the main pedestrian street. It would be also visited.
- From 3rd August there will be Bansko Jazz fest. Every evening from 20:00 at the Bansko Main Square.



2024 FISU WORLD UNIVERSITY CHAMPIONSHIP ORIENTEERING

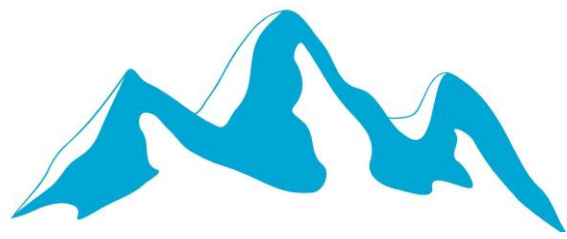


BANSKO 2024

FISU
WORLD
UNIVERSITY
CHAMPIONSHIP
ORIENTEERING

QUESTIONS FROM Bulletin 4





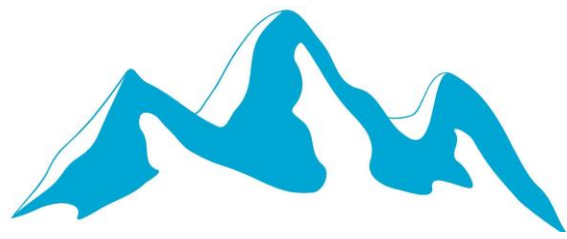
2024 FISU WORLD UNIVERSITY CHAMPIONSHIP ORIENTEERING



BANSKO 2024

FISU
WORLD
UNIVERSITY
CHAMPIONSHIP
ORIENTEERING

COMPETITION



2024 FISU WORLD UNIVERSITY CHAMPIONSHIP ORIENTEERING



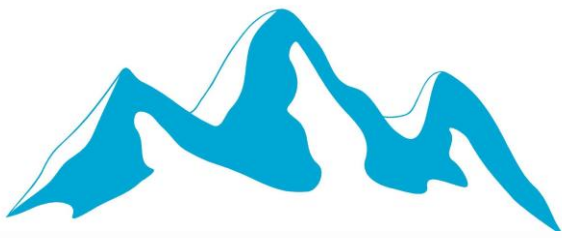
FISU
WORLD
UNIVERSITY
CHAMPIONSHIP
ORIENTEERING

SPRINT

The entry deadline for Sprint relay will be 18:00 on 1st August.

Entry forms will be distributed in the team boxes and also will be sent to the mail addresses in the night.

SIAC battery test at the entrance of the quarantine.

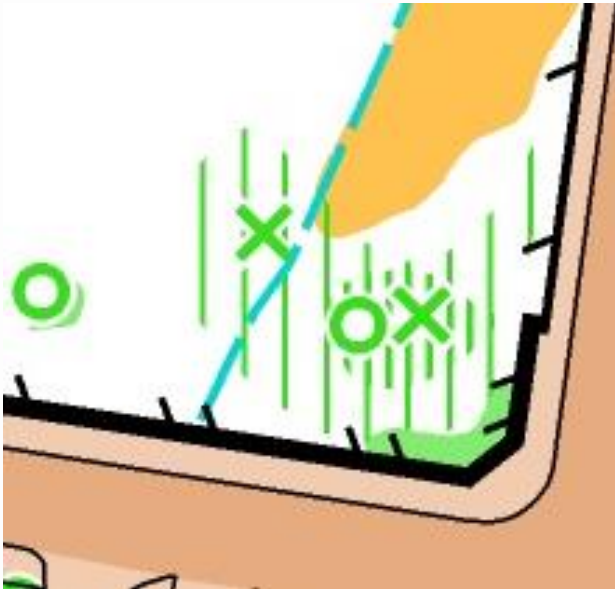


2024 FISU WORLD UNIVERSITY CHAMPIONSHIP ORIENTEERING



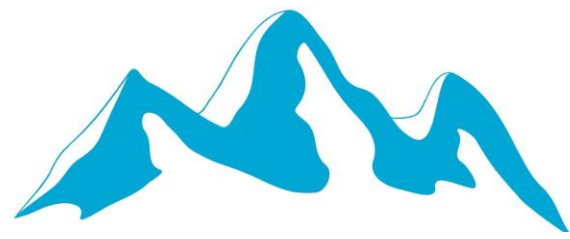
BANSKO 2024

FISU
WORLD
UNIVERSITY
CHAMPIONSHIP
ORIENTEERING



There was cleaning of the park last week and these bushes in the south-east part of the park are cleaned. Now it is a white forest.





2024 FISU WORLD UNIVERSITY CHAMPIONSHIP ORIENTEERING

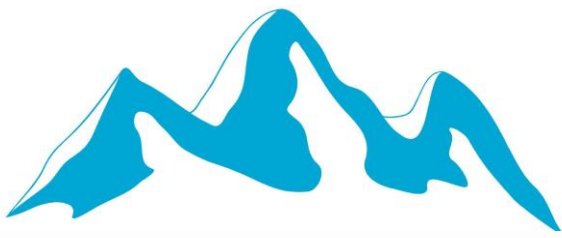


BANSKO 2024

FISU
WORLD
UNIVERSITY
CHAMPIONSHIP
ORIENTEERING



There is one café, which is with many chairs, benches and tables. It is given with Symbol 533. Area with obstacles. Running through the café is allowed and the organizers will try to move most of the obstacles.



2024 FISU WORLD UNIVERSITY CHAMPIONSHIP ORIENTEERING

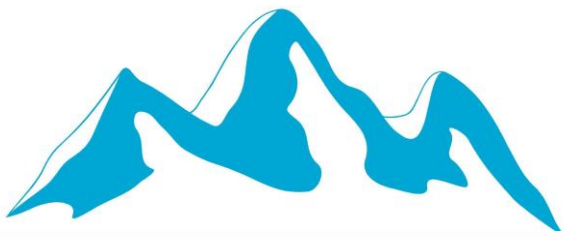


BANSKO 2024

FISU
WORLD
UNIVERSITY
CHAMPIONSHIP
ORIENTEERING



The cool down area is marked with Symbol 709. Out of bounds area. It is not allowed to go back to competition area.

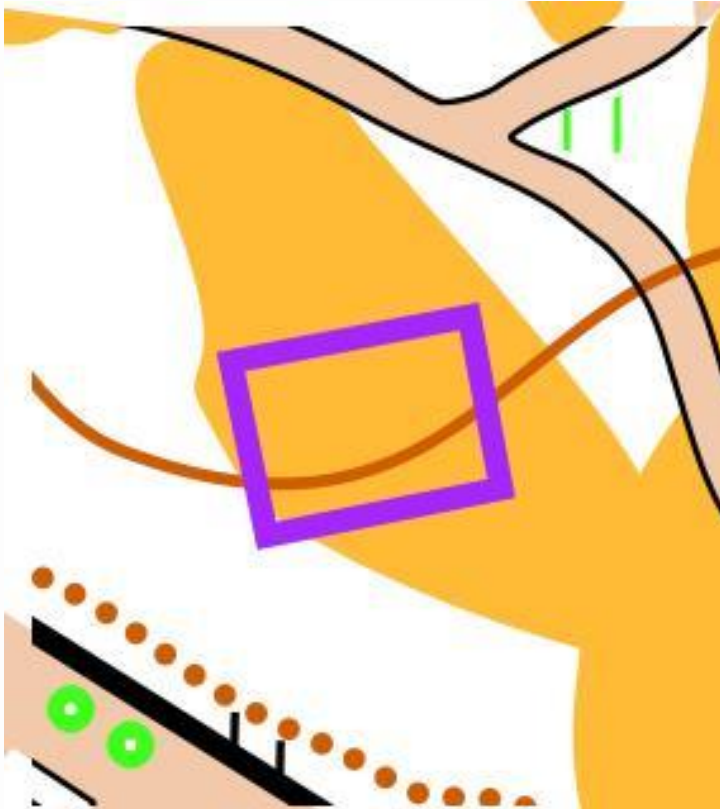


2024 FISU WORLD UNIVERSITY CHAMPIONSHIP ORIENTEERING



BANSKO 2024

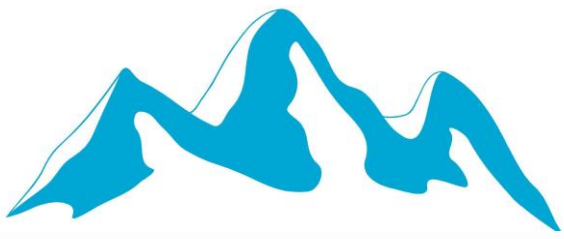
FISU
WORLD
UNIVERSITY
CHAMPIONSHIP
ORIENTEERING



Mobile scene was built up yesterday in the city park.

It is not marked on the map.





2024 FISU WORLD UNIVERSITY CHAMPIONSHIP ORIENTEERING



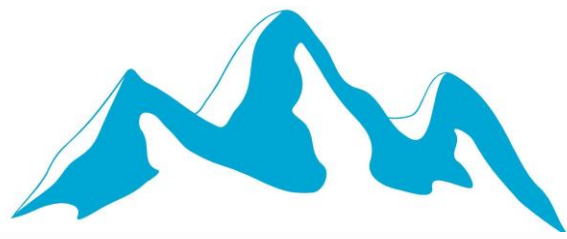
BANSKO 2024

FISU
WORLD
UNIVERSITY
CHAMPIONSHIP
ORIENTEERING



Some holders for outdoor art exhibitions are placed on several places in the centre of Bansko. They are not mapped.





2024 FISU WORLD UNIVERSITY CHAMPIONSHIP ORIENTEERING

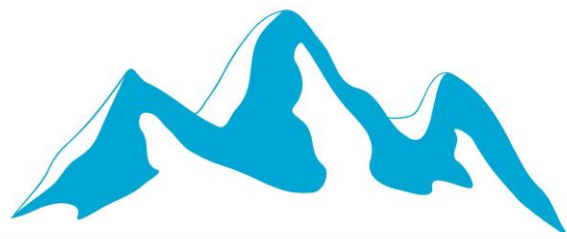


BANSKO 2024

FISU
WORLD
UNIVERSITY
CHAMPIONSHIP
ORIENTEERING



Some tents or umbrellas with tables, chairs and small outdoor shops are placed are possible to be found in the centre of Bansko. They are not mapped. The organizers will try to remove most of them.



2024 FISU WORLD UNIVERSITY CHAMPIONSHIP ORIENTEERING

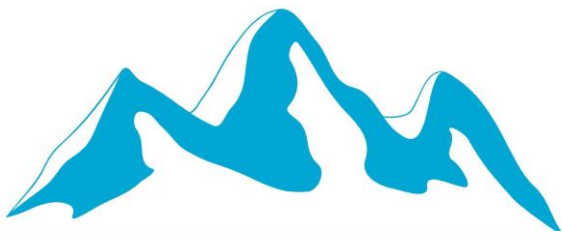


BANSKO 2024

FISU
WORLD
UNIVERSITY
CHAMPIONSHIP
ORIENTEERING



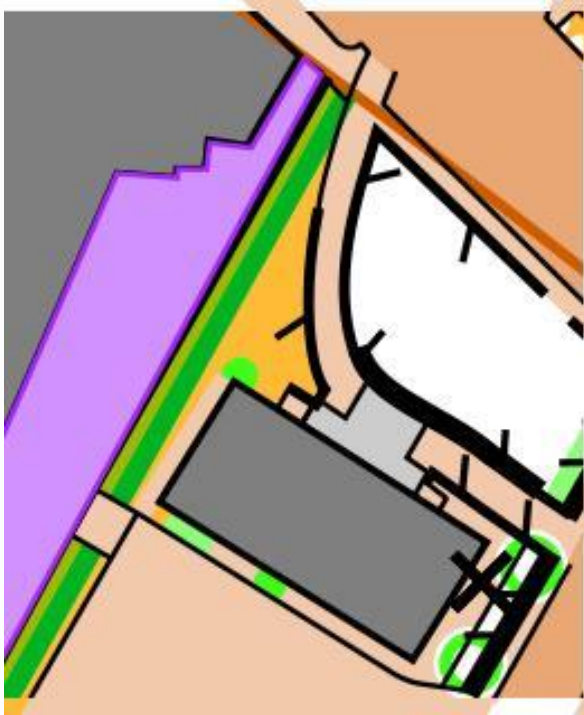
A new construction today on the parking. It is not mapped and runners can find their way through the small buildings which will be closed tomorrow.



FISU
WORLD
UNIVERSITY
CHAMPIONSHIP
ORIENTEERING

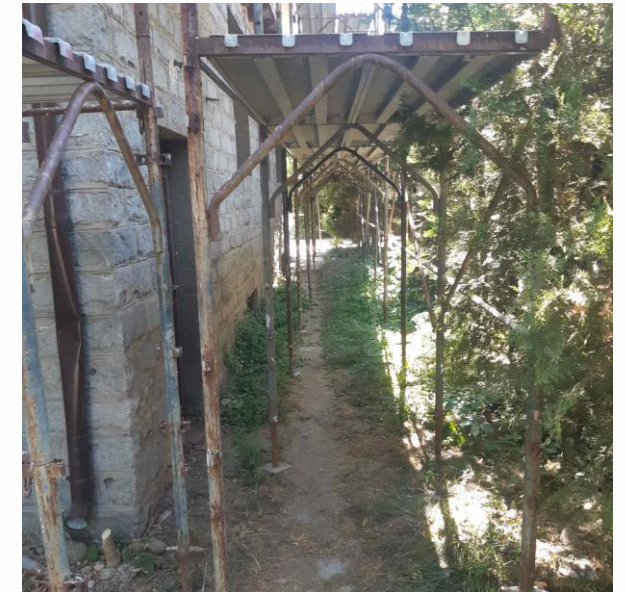
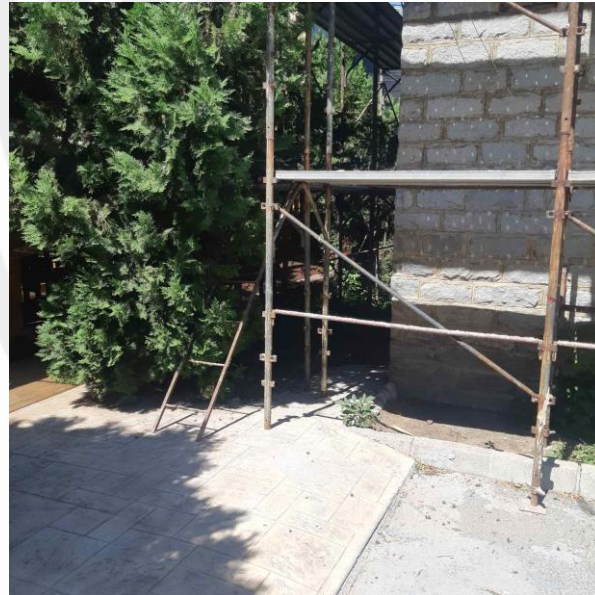
2024 FISU WORLD UNIVERSITY CHAMPIONSHIP ORIENTEERING

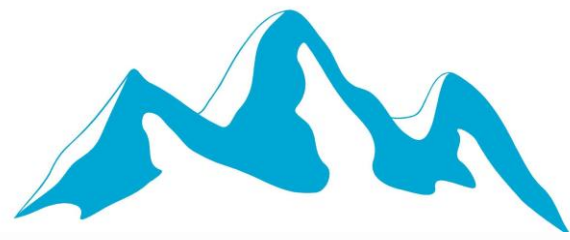
BANSKO 2024



A building was prepared for renovation. There is a construction on the walls.

The narrow passage between the onliest uncrossable hedge on the map and the building is passable - 0,42mm gap on the map. It is also possible to be passed on the terrain.





2024 FISU WORLD UNIVERSITY CHAMPIONSHIP ORIENTEERING

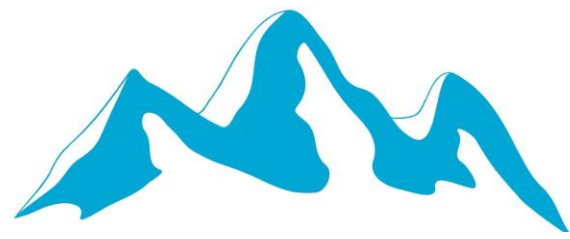


BANSKO 2024

FISU
WORLD
UNIVERSITY
CHAMPIONSHIP
ORIENTEERING

One balance band on the terrain. It will be taped with red-white tapes.



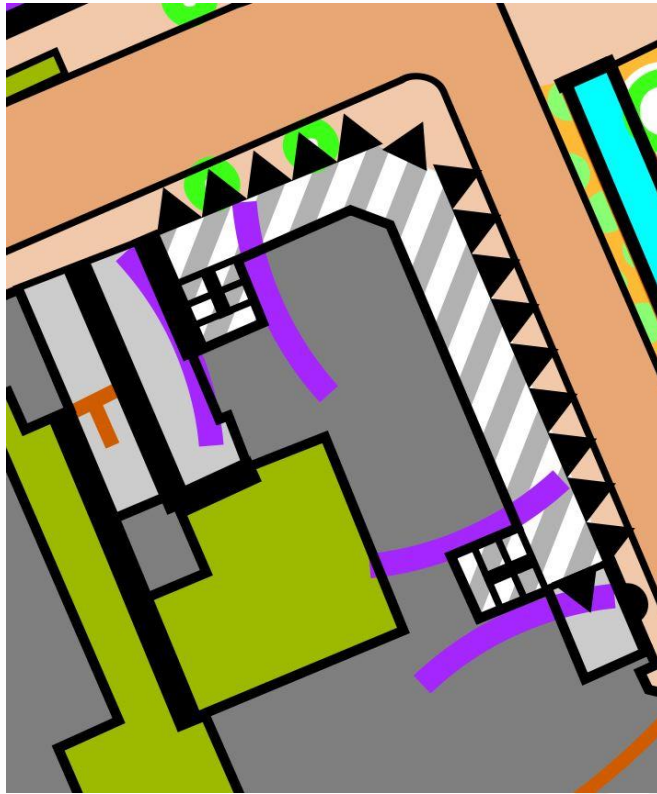


FISU
WORLD
UNIVERSITY
CHAMPIONSHIP
ORIENTEERING

2024 FISU WORLD UNIVERSITY CHAMPIONSHIP ORIENTEERING

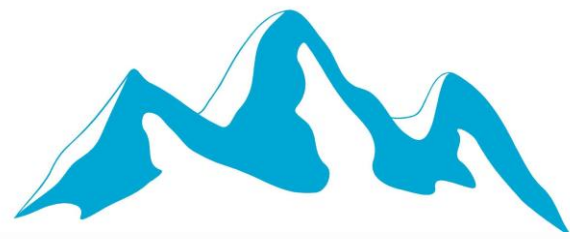
BANSKO 2024

SPRINT RELAY



There are stairs on two levels in the sprint relay competition. They are marked with Symbol 710. Crossing point.





2024 FISU WORLD UNIVERSITY CHAMPIONSHIP ORIENTEERING

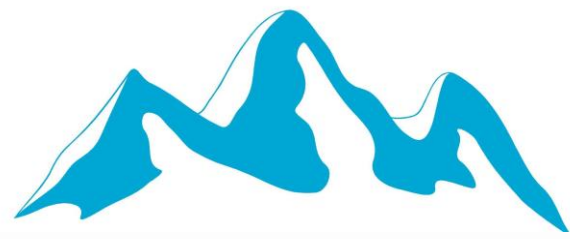


BANSKO 2024

FISU
WORLD
UNIVERSITY
CHAMPIONSHIP
ORIENTEERING

QUESTIONS FROM THE MAIL:

1. Will it be the same print and quality of the colours as on the model event? Are the colors on the competition map better? Will the competition maps printed with the same colour standard of the model maps? – **It will be better quality.**
2. In the bulletin, it says that there will only be "one" artificial barrier. Can you confirm that there is only one? **Several artificial barriers. Only one metal fence with tape will be on the terrain for one close street. It will be guarded by one of the organizers with blue T-shirt.**
3. Are the hedges in the darkest Green (forbidden Green)? Cause today the Green was very Blue. **No such hedges today on the map. No symbol 411.2 used today on the map.**
4. Would the athletes be allowed to wear GPS watches during competitions? – **It is stated in the Bulletin.**
5. How far is the start triangle from the start area in the sprint? – **25 m from start point to the triangle.**
6. Have you taped all the uncrossable hedges and uncrossable vegetations (symbol 411 and 411.002) in the competitions? - **No**



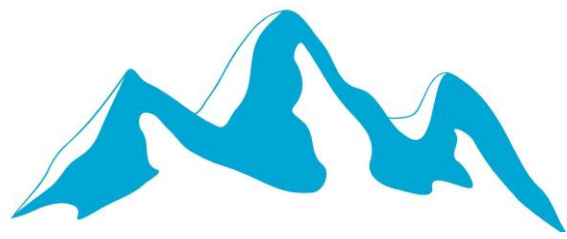
2024 FISU WORLD UNIVERSITY CHAMPIONSHIP ORIENTEERING



FISU
WORLD
UNIVERSITY
CHAMPIONSHIP
ORIENTEERING

QUESTIONS FROM THE MAIL:

1. Is it allowed to wear Garmin sport watch during the competition if its not used for navigation? - **Yes.**
 2. Are there plastic bags available at the start? - **No**
 3. How does the blue X symbol look like in terrain? (Can be found in old middle distance map. – **It is question for the 2nd technical meeting.**
 4. Is there going to be an indoor quarantine for any of the races? – **For both sprint and sprint relay there will be indoor facilities.**
 5. Does the sprint maps follow the sprint norm? At the model event the hedge at control 32 too thin. – **Yes. The hedge on 32 is with Symbol 410 – Vegetation fight. There is no Symbol 411.2 on the map.**
 6. Is unclear forbidden areas marked with tapes in the terrain? **Yes**
-
1. Are all kinds of GPS-watches forbidden during the competitions? **No**
 2. Just in case: Where are the complain forms? **At the finish arena.**
 3. The greens on the sprint-model where unclear. Will it be clear on the competition maps what is allowed to run through? – **Yes. Only one, which is not physically possible to be crossed.**



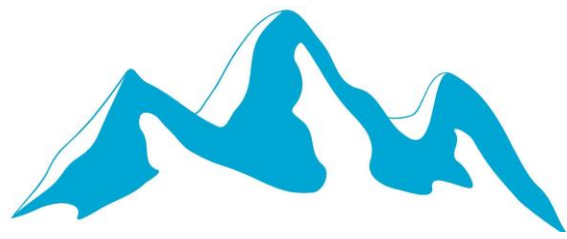
2024 FISU WORLD UNIVERSITY CHAMPIONSHIP ORIENTEERING



FISU
WORLD
UNIVERSITY
CHAMPIONSHIP
ORIENTEERING

QUESTIONS FROM THE MAIL:

- 1.Both - How much space is there to warm-up at the sprint quarantine? And at the sprint relay quarantine? – **Difficult to say.**
- 2.Both - How many toilets will there be at the sprint quarantine? And at the sprint relay quarantine? – **Sprint: 8 outdoor toilets. /Sprint relay: 5+5 indoor and 4 outdoor.**
- 3.Both - How much indoor shelter is that at the sprint quarantine? And at the sprint relay quarantine? – **Difficult to say.**
- 4.Both - The printing of the colours on the sprint model map is weird. It is hard to tell if hedges are symbol 410 (crossable) or 411 (uncrossable). Will the printing be the same in the sprint and sprint relay? Will all hedges mapped 411 be taped? If not, how will the athlete know what they can cross? – **There will be no such a dilemma for sprint. For the sprint relay it will be clear.**
- 5.Both – Will control circles be printed with the same size as those on the sprint model map? Will there be white background around the control numbers? **Yes, by the standarts. No white, no bold.**
- 6.Sprint - At the map flip, the first part finishes at a control. Is that control the start kite for the second part? **Yes, it is described in the Bulletin.**
- 7.Sprint relay – Do runners have to punch the start kite at the start of the second part after the map flip? – **No – it is only kite, without punching station.**



2024 FISU WORLD UNIVERSITY CHAMPIONSHIP ORIENTEERING



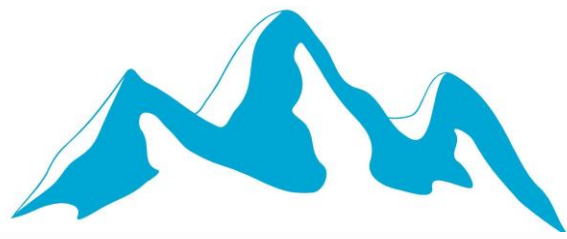
FISU
WORLD
UNIVERSITY
CHAMPIONSHIP
ORIENTEERING

QUESTIONS FROM THE MAIL:

-Are the symbols 408/410 used on the competition maps and are there route choices through it ? **They are used.**

-Is it possible for first starter to come back to the accomodation before the opening ceremony or they have to stay in after-finish area ? – **Yes, but make sure they will come back for the Opening ceremony.**

Is it possible that the controls for the forest model will be available until Saturday? – **Yes, however we can not guarantee their presence.**



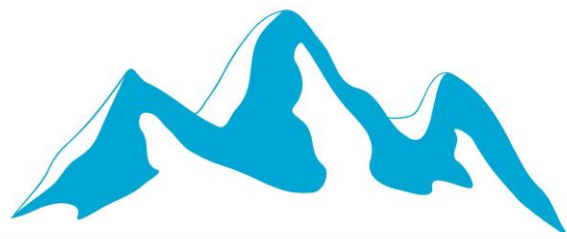
2024 FISU WORLD UNIVERSITY CHAMPIONSHIP ORIENTEERING



FISU
WORLD
UNIVERSITY
CHAMPIONSHIP
ORIENTEERING

QUESTIONS FROM THE MAIL:

- We saw in the Model that some Uncrossable vegetation greens (symbol 411) had some wholes in the reality. Will they be taped so there is no confusion to cross them? **There is no hedges 411.2 on the sprint model event map. They will not be taped on the terrain.**
- About the streets in construction, will they be marked on the map? – **There will be no construction on the streets for Sprint and Sprint relay**
- Will there be water in the prestart and start? – **Yes, all tap water is drinkable.**



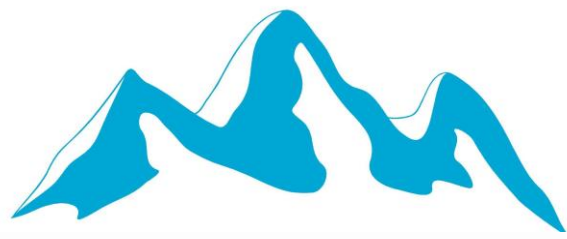
2024 FISU WORLD UNIVERSITY CHAMPIONSHIP ORIENTEERING



FISU
WORLD
UNIVERSITY
CHAMPIONSHIP
ORIENTEERING

QUESTIONS FROM THE MAIL:

- when is approximately (%) the arena passage at the sprint? – **This information is confidential.**
- when is approximately (%) the arena passage at the sprint relay? – **This information is confidential.**
- how far is the K-point (start triangle) for the sprint and sprint relay races? – 25 m. 15 m
- is written the code next to the control circle at the sprint relay or only the progressive numbering? (example: 1-31 or only 1) – **No code. Only number.**
- after the map flip at both sprint races, the course will start with a triangle and continuous numbering, or with symbol 715 (control circle with triangle inside)? **Triangle. It is fully described in the Bulletin.**
- is there indoor/outdoor areas at sprint quarantines and enough space for warmup? - **Yes**



2024 FISU WORLD UNIVERSITY CHAMPIONSHIP ORIENTEERING



BANSKO 2024

FISU
WORLD
UNIVERSITY
CHAMPIONSHIP
ORIENTEERING

Thanks
for your attention